

**DANGER**

**BOATING TAKE OUT ONLY**

**HAZARDOUS DAM LOCATED 2500 FEET DOWN RIVER**

**DO NOT SWIM OR LAUNCH BOATS AT THIS LOCATION**

**WARNING**

**DAM AHEAD 2,500 FEET**

**LAST LANDING ON LEFT**

**ALL BOATERS MUST EXIT**

**DANGER**

**DAM AHEAD**

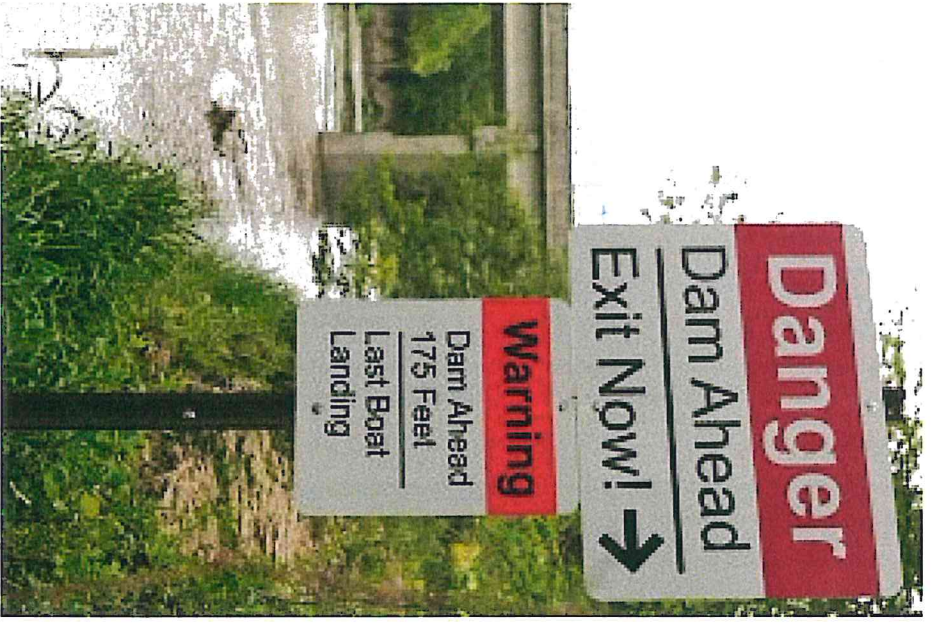
**BOATERS MUST TAKE OUT HERE**

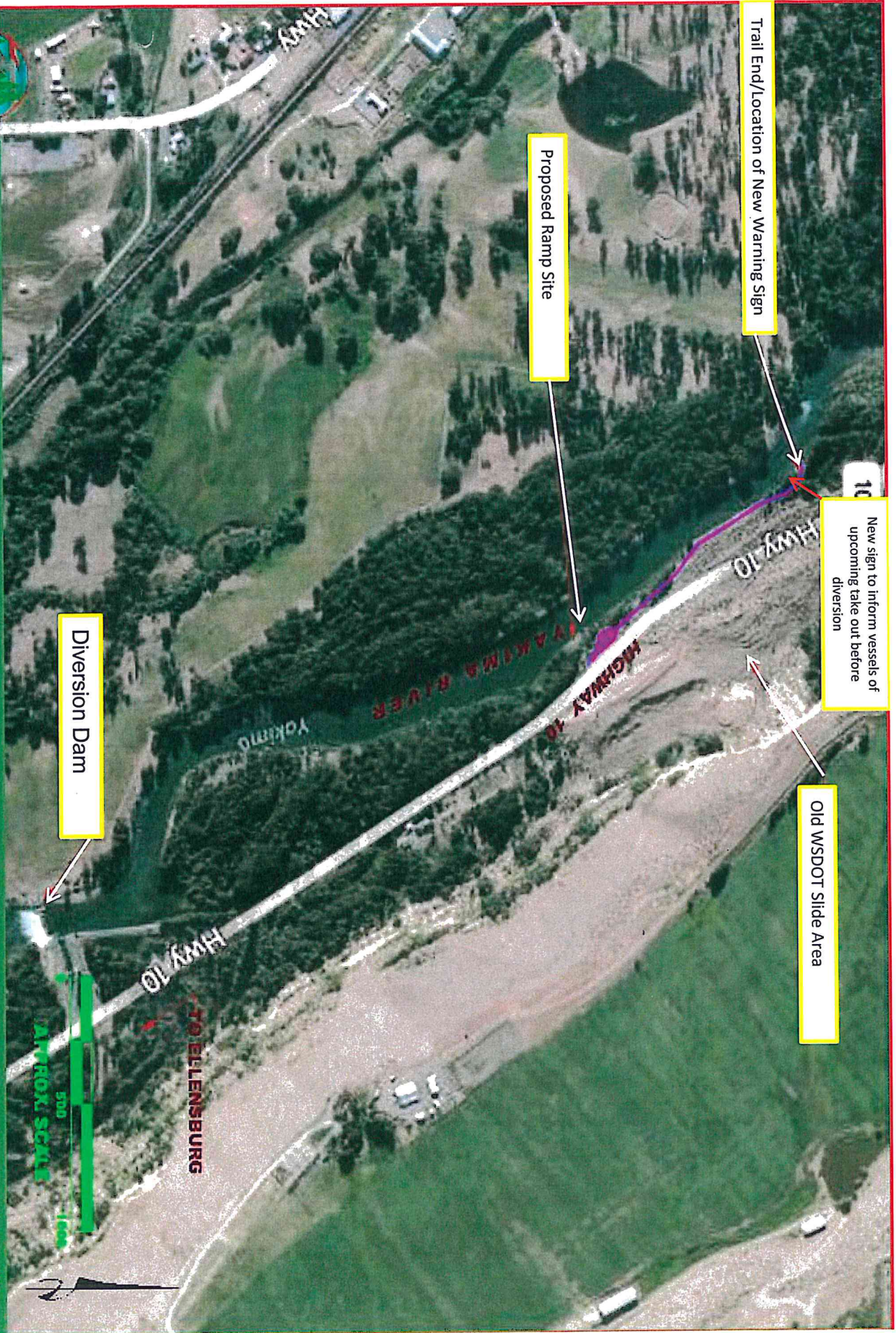
**EXTREME DANGER**

**NO BOATING, WADING, FISHING, OR SWIMMING  
HERE TO DAM**



4x65





Trail End/Location of New Warning Sign

Proposed Ramp Site

New sign to inform vessels of upcoming take out before diversion

Old WSDOT Slide Area

Diverison Dam

YAKKIMA RIVER & HIGHWAY 10

ACCESS SITE

RCCO PROPOSAL

EXISTING OVERFALL SITE

APPROX. SCALE

500 1000

